



©Nathan Kou



©Sharek Youth Forum



Never giving up,
to a future of peace that lies ahead

2024
Annual Report

About World in Peace

When we started World in Peace, we came to an important realization: in Japan—and in many other places—young people don’t always get the chance to take real action on social issues. In Japan’s education system, for instance, a lot of learning is based on memorization. There’s often little room for discussion, hands-on problem-solving, or teamwork. These elements make it hard for students to build initiative or leadership skills—qualities that are essential to start something like a nonprofit or lead a project. In other countries, especially in the West, it’s more common for students to engage in debates, group work, or even launch their own organizations in high school or university. Seeing this contrast made us realize how much culture and systems influence what young people feel they can do.

That’s why, at World in Peace, we do things differently. From running the organization to delivering aid, young people are at the center of everything. We believe that by giving youth real responsibility and the tools they need, we can help them grow into leaders who make a lasting impact—starting now, not someday.

We’re not tied to one issue or one way of working. Instead, we focus on what matters most: creating a more peaceful world, and making sure the next generation has a voice in shaping it.

VISION

*A planet where peace isn’t just a dream
but a reality for everyone*

MISSION

*A world where respect and unity replace conflict,
building bridges instead of walls.*

The Meaning Behind Our Name and Logo

The name World in Peace (WiP) embodies our hope for a world where peace is not just a temporary state but a lasting reality. It reflects our commitment not only to address immediate challenges, but also to lay the foundation for sustainable peace that continues into the future. The abbreviation WiP also echoes the phrase “Work in Progress”, reminding us that peace is not something achieved overnight—it is something we must continuously build through the efforts of each individual.

The flowing design of the “WiP” logo symbolizes agility and adaptability, representing our organization’s commitment to respond swiftly and flexibly, even in the face of adversity. The logo’s signature color, Peace Blue, conveys trust and stability. It represents the calm judgment and expertise required in international cooperation, development assistance, humanitarian aid, and disaster response. The color reflects our mission to act with composure and purpose, even in the most challenging situations, and to work tirelessly for a peaceful world.



Message from the Representative

World in Peace was founded in May 2024 with one simple goal: to create a space where young people can take real action on global issues. As the world faced various humanitarian challenges this past year—from the war in Ukraine to the ongoing crises in Gaza and Afghanistan—we asked ourselves: What can youth do in all this?

We realized that in countries like Japan, young people often don’t get the chance to lead. There are only a few spaces where they can actually put their ideas into practice. That’s why we created this platform—to turn passion into action.

With your support, we raised over 500,000 yen and launched six projects in our very first year. Some are still underway, and we’re proud of how far we’ve come. Of course, it wasn’t all easy. When the earthquake struck Myanmar, we wanted to help—but didn’t have the resources. That moment reminded us how much more we need to grow.

But we’re not giving up. We’re just getting started.

As we look to 2025, we’re more committed than ever—to reaching more people in need, and to empowering youth to step up and lead. Your support makes that possible. Together, we can keep moving forward—one action at a time.

Founder & Executive Director, World in Peace

Lu He Rikuto (Hibi) Hong

Founder
Social Activist
High School Student



Message from the Deputy Representative

One year ago, together with our representative, I co-founded World in Peace. Thanks to your support, we’ve reached our first anniversary—a milestone we could not have achieved without the generosity and encouragement of people like you. I am truly grateful.

Our mission is simple yet powerful: to empower youth and contribute to global peace. As students, we’ve been learning how to turn our values into action. Though we’ve faced many challenges along the way, your belief in us has kept us moving forward.

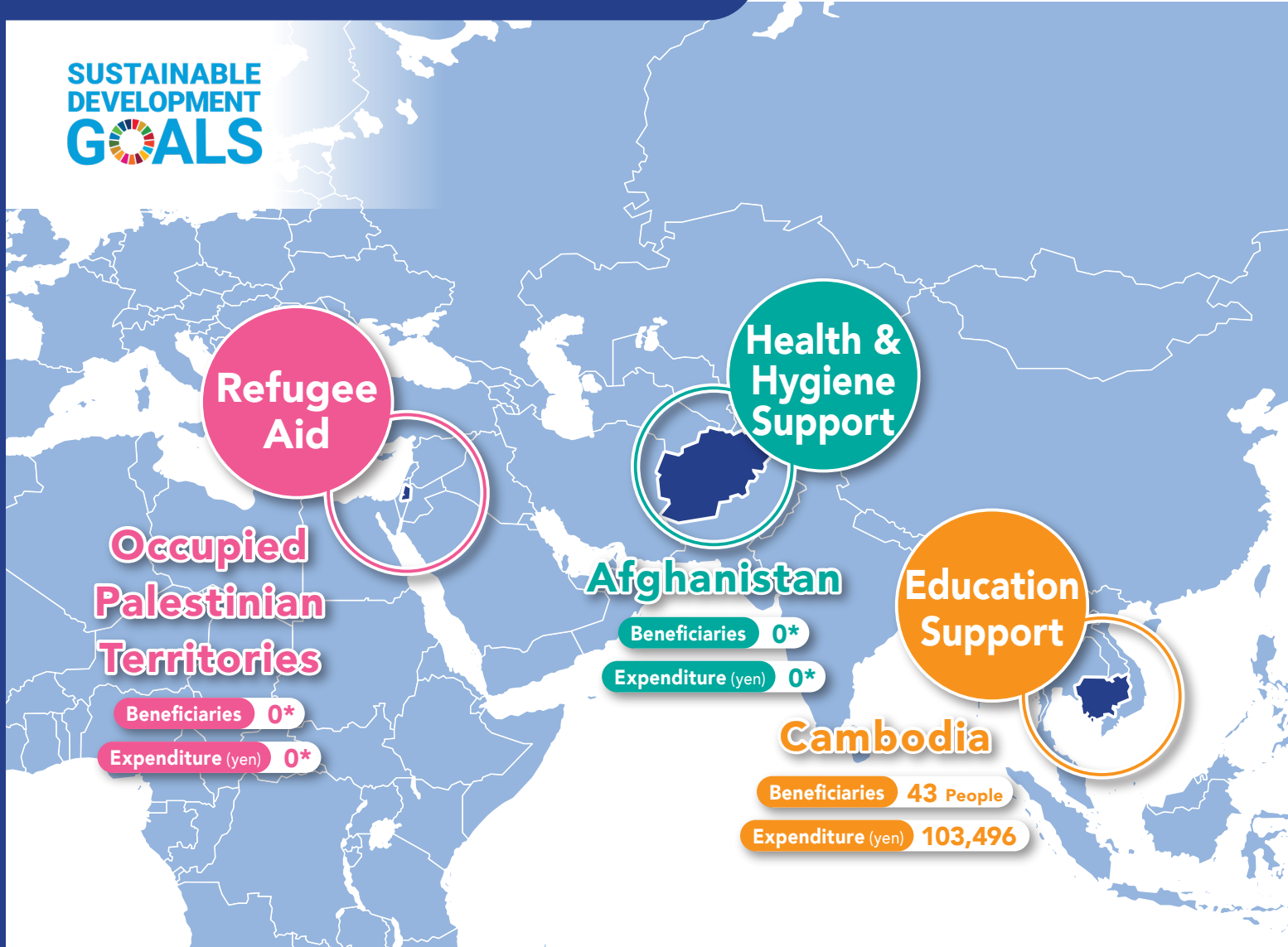
A project especially close to my heart is our public health initiative in Afghanistan. Before founding World in Peace, I was personally involved in supporting a local clinic there. Since then, we’ve expanded our efforts to include repairing and building school toilets, improving children’s health and well-being in the community. As Deputy Representative and project lead, I take this responsibility seriously. Despite financial challenges, we remain committed to creating meaningful, lasting impact. Thank you for standing with us. We look forward to your continued support.

Co Executive Director, World In Peace

Yuuka Iwaki

Co-Founder
Highschool student





Health & Hygiene Support

Islamic Republic of Afghanistan

2024/6/2 ▶ Ongoing

Public Health Project in Afghanistan

Promoting school toilet facilities, medical assistance, and hygiene education in the region, where the humanitarian crisis is exacerbated by conflicts and natural disasters.

1 NO POVERTY, 3 GOOD HEALTH AND WELL-BEING, 4 QUALITY EDUCATION, 6 CLEAN WATER AND SANITATION, 10 REDUCED INEQUALITIES, 17 PARTNERSHIPS FOR THE GOALS

Refugee Aid

Occupied Palestinian Territory

2024/12/14 ▶ Ongoing

Humanitarian Aid in OPT

In the Gaza Strip, residents face food and medicine shortages and the risk of infectious diseases. Plans to start psychological care and recreational support for children in Gaza in cooperation with local organizations. Plans to continue to provide ongoing support depending on the availability of funds.

3 GOOD HEALTH AND WELL-BEING, 16 PEACE, JUSTICE AND STRONG INSTITUTIONS, 17 PARTNERSHIPS FOR THE GOALS

Education Support

Cambodia

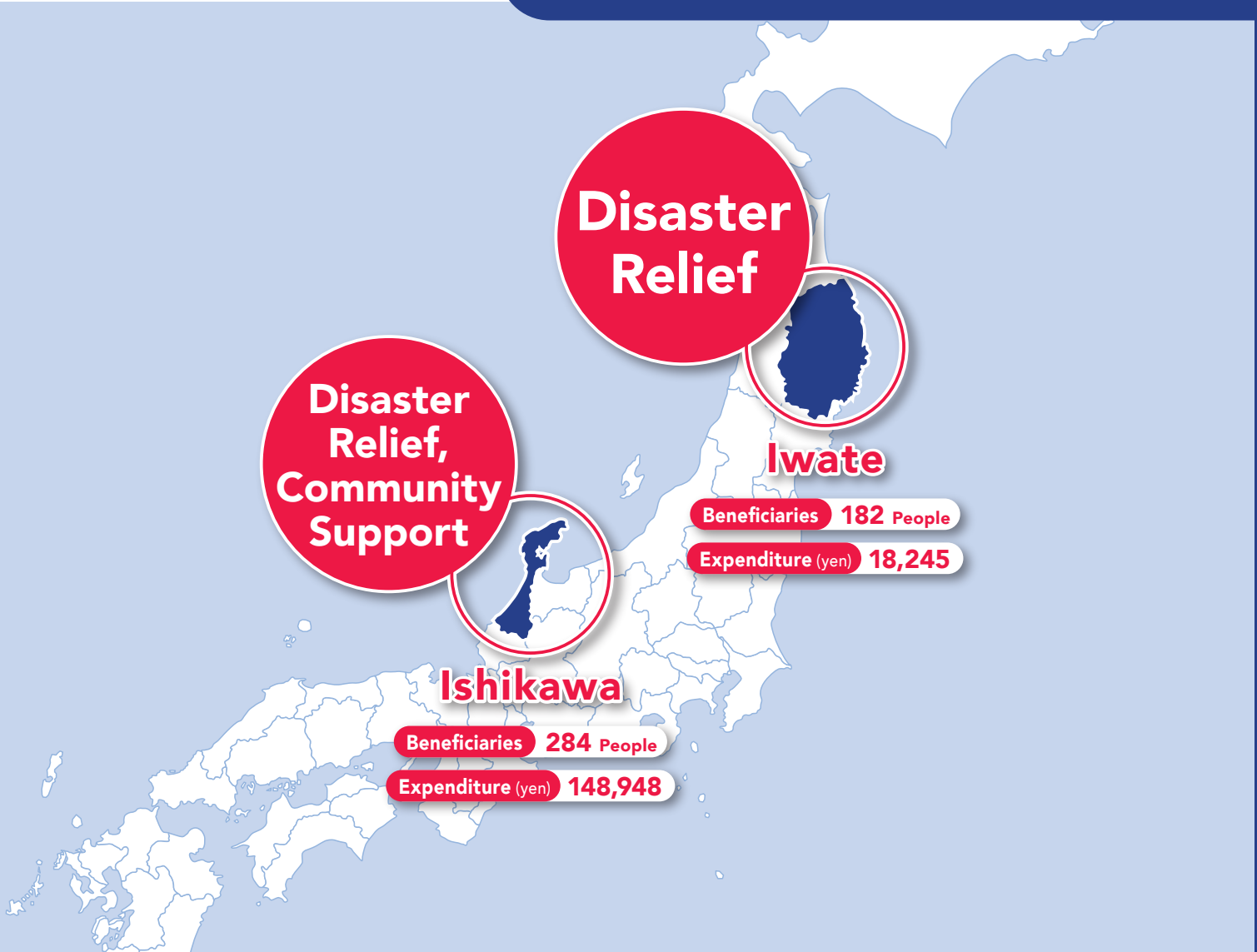
2025/3/27

Education Support

Working with local partners in two regions of Cambodia, we distributed learning materials and improved classroom environments. Even in simple schools, we provided support for teaching materials and delivered gifts of water guns and sweets to children during the Khmer New Year.

1 NO POVERTY, 4 QUALITY EDUCATION, 10 REDUCED INEQUALITIES

*This project year was limited to needs assessment and planning; no implementation was carried out.



Disaster Relief, Community Support

Ishikawa Prefecture

2024/9/24 ▶ Ongoing

Noto Region Rain Disaster

A linear precipitation zone occurred in the Okunoto region, causing flooded roads, flooded houses, power outages, and water outages. We provided supplies of body wipes and emergency toilets, and as part of community support, we provided equipment and supplies such as snacks and drinks for workshops and other events.

11 SUSTAINABLE CITIES AND COMMUNITIES, 17 PARTNERSHIPS FOR THE GOALS

Disaster Relief

Iwate Prefecture

2025/3/2 ▶ Ongoing

Ofunato City Wildfire

A massive forest fire that occurred on February 26 in Ofunato City, Iwate Prefecture, destroyed 2,900 hectares, or 9% of the city area. In cooperation with the local community, we provided material support such as toiletries for women, hairbrushes, and razors.

11 SUSTAINABLE CITIES AND COMMUNITIES, 17 PARTNERSHIPS FOR THE GOALS

Events/Advocacy

Fair Trade & Advocacy

2024/11/16

Selling fair trade products and conducting advocacy activities at the International Fair in November 2024. The event communicated the significance of fair trade to a wide range of people and provided an opportunity for children to learn about fair trade in a fun way. All products were sold out and received a great response.

8 DECENT WORK AND ECONOMIC GROWTH, 10 REDUCED INEQUALITIES, 12 RESPONSIBLE CONSUMPTION AND PRODUCTION, 17 PARTNERSHIPS FOR THE GOALS

Expenditure (yen) 55,490

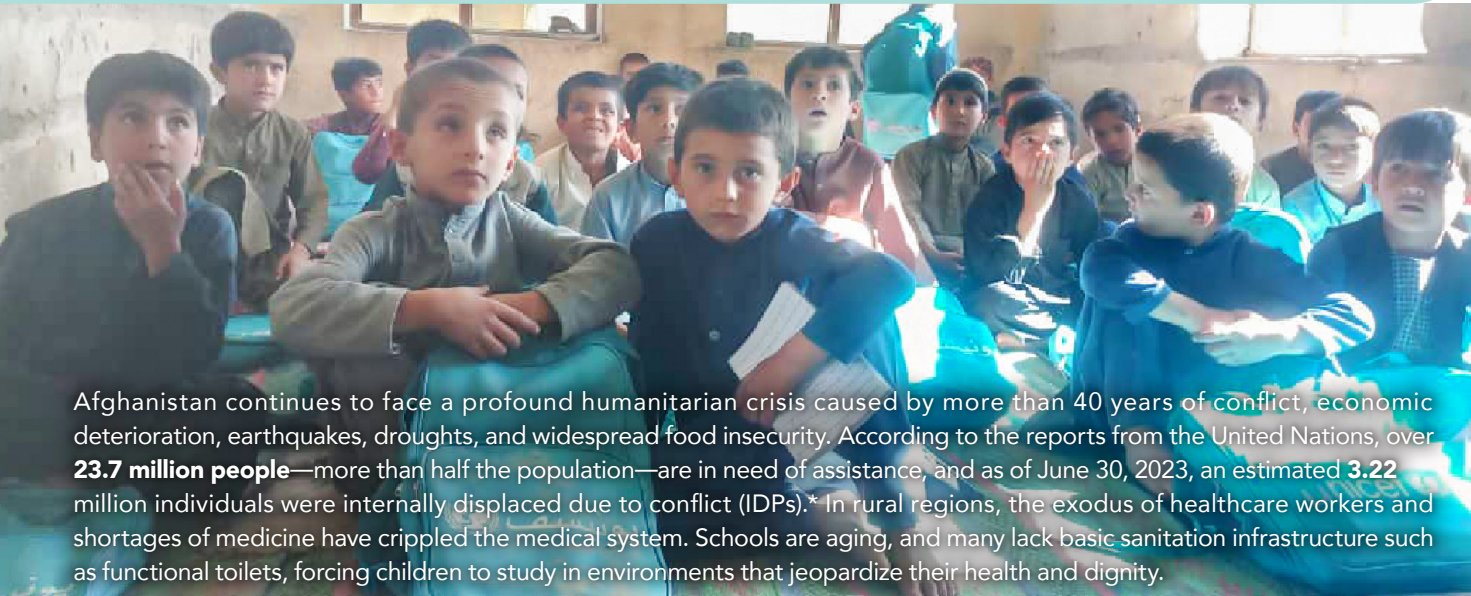
Medical and Hygiene Support Program

2024/6/2 ▶ Ongoing

Improvement of Sanitation Facilities in School Institutions

Islamic Republic of Afghanistan

A high school in Hesarak village, Logar Province;
Dr. Roshan's Clinic for Children or Hesarak Clinic for Women



Afghanistan continues to face a profound humanitarian crisis caused by more than 40 years of conflict, economic deterioration, earthquakes, droughts, and widespread food insecurity. According to the reports from the United Nations, over **23.7 million people**—more than half the population—are in need of assistance, and as of June 30, 2023, an estimated **3.22 million** individuals were internally displaced due to conflict (IDPs).* In rural regions, the exodus of healthcare workers and shortages of medicine have crippled the medical system. Schools are aging, and many lack basic sanitation infrastructure such as functional toilets, forcing children to study in environments that jeopardize their health and dignity.

*UNHCR Afghanistan



In collaboration with local partner **EJAAD**, World in Peace is working to improve both school sanitation and local healthcare facilities. At a high school in Hesarak village, Logar Province—where around **600 students** are enrolled—only **six toilets** are available, many of which are in disrepair and unusable. Our plan includes building six new toilets and repairing existing facilities to create a cleaner and safer learning environment. To ensure sustainable support, this project goes beyond infrastructure, integrating **hygiene education programs** aimed at instilling long-term habits and community-wide awareness of sanitary practices.

As of this fiscal year, however, activities have been limited to needs assessments and on-site research. Due to a **critical funding shortage**, construction has not yet begun. We are calling for warm support from all who wish to help provide a safe, hygienic learning space for the **600 children** who continue to study under challenging conditions.

Refugee Support Program

2024/12/14 ▶ Ongoing

To be determined

Humanitarian Aid for the Gaza Strip

Occupied Palestinian Territory

Often referred to as an "open-air prison," the Gaza Strip offers no safe refuge or means of escape, forcing many residents into prolonged displacement. Civilians in Gaza struggle daily to secure food, clean water, and medical supplies while living in constant fear. The situation is compounded by a collapsed healthcare system and deteriorating sanitation, which have led to increasing risks of infectious diseases and other health crises. Meanwhile, on the Israeli side, the hostage crisis persists, and civilians on both sides continue to suffer the consequences of ongoing armed conflict.

Despite these dire circumstances, many organizations remain committed to the mission of **protecting human life and dignity**, continuing humanitarian efforts under increasingly difficult conditions. As the crisis drags on, there is growing concern that access to affected populations may become even more restricted, placing their health and survival at further risk.

World in Peace plans to collaborate with local partners to provide humanitarian assistance. The **first phase** of the program will focus on **psychological support for children in Gaza**, including trauma care and recreational activities aimed at emotional relief. Following the completion of this phase, we intend to continue our efforts as funding permits, delivering sustained aid to those in need.



Education Support Program

2025/3/27

Damnak Chang Aeur village,
Koh Po Island

Educational Materials Support Project in Cambodia

Kingdom of Cambodia



World in Peace carried out educational support in two locations in Cambodia, in collaboration with Mr. Nathan Kou and his team. At a community kindergarten in **Damnak Chang Aeur village**, we distributed backpacks filled with learning materials (notebooks, pens, pencils, colored pencils, water bottles, whiteboard markers, and pencil cases) to 18 enrolled children. To enhance the learning environment, we also installed lighting and fans in the classroom, and provided financial support to sustain educational activities.

Additionally, we extended our support to **Koh Poan Island**, located off the coast of Cambodia, where only one school serves the entire island. The island is home to a small community that relies mainly on fishing and eco-tourism, and the school serves 27 children aged 5 to 15. Despite the modest facilities—consisting of plastic chairs, wooden beds, a blackboard, and a tin roof—one dedicated teacher with the equivalent of a 6th-grade education continues to do their best to educate the children. Here, too, we provided students with backpacks filled with essential school supplies. To coincide with the Khmer New Year, we also prepared special gifts such as water guns and snacks, allowing the children to enjoy a moment of festive joy.

※This project was made possible not by World in Peace alone, but with the generous support of other donors.
We extend our heartfelt thanks to all who contributed.

Disaster Relief, Community Support 2024/9/24 ▶ Ongoing

Torrential Rain Disaster in Noto

Ishikawa
Prefecture

Following the Noto Peninsula Earthquake on January 1, 2024, a linear precipitation band struck the Oku-Noto region on September 21, causing severe flooding of roads, homes, with power and water outages, and landslides that left some communities isolated. As the area was still recovering from the earthquake, this rain forced many residents to lose their livelihoods once again, facing further hardship in the midst of reconstruction.

In partnership with local organizations, World in Peace responded to the needs of affected communities. In areas where water supply was cut off for extended periods, demand increased for body wipes and emergency toilets.



World in Peace distributed a total of **720 body wipes** to areas near Wajima through local supply distribution events. In addition, due to the lack of flushable toilets, **1,800 emergency toilet uses** were supplied to meet the urgent sanitation needs.

As people began moving into temporary housing, concerns arose over isolation and health issues caused by prolonged displacement—such as insomnia or physical illness stemming from stress. To address this, World in Peace supported community-building efforts by providing **snacks, drinks, and other consumables and supplies** for events organized through the NPO CONCENT, including magic shows, massage sessions, and paracord workshops for residents of all ages.

Disaster Relief Program

2025/3/2 ▶ Ongoing

Wildfire Disaster in Ofunato

Iwate
Prefecture

A large-scale forest fire that broke out on February 26 in Ofunato City, Iwate Prefecture, burned approximately **2,900 hectares**, accounting for 9% of the city's area.* The disaster resulted in **1 fatality**, damage to about **102 homes**, and evacuation orders affecting **1,896 households and 4,596 people** at its peak.

In the area of Ofunato, the private salon Harmo served as a hub for gathering and organizing relief supplies from across Japan based on local needs assessments. In coordination with their activities, World in Peace provided essential relief items in response to specific needs, including: **200 sets of women's amenities** (e.g., hair ties, cotton swabs), **250 hairbrushes**, **200 razors**, and **2,000 plastic bags**.

*Source: Asahi Shimbun

Events and Awareness

2024/11/16

Japan

International Fair 2024



On November 16, 2024, World in Peace participated in the **International Fair 2024**, where we hosted a booth dedicated to the sale of fair trade products and conducted advocacy activities. This event provided a valuable opportunity to promote the importance of **international humanitarian assistance and fair trade** to a wide audience. Our booth featured a variety of fair trade items, including **coffee, chocolate, and tea**. To engage younger generations, we prepared **chocolate giveaways and a stamp rally** activity. For adults, we offered coffee and tea samples, designing the booth to attract attention across all age groups.



Products included well-known fair trade brands such as **Tony's Chocolonely**, **Wakachiai Project coffee**, and **tea from Dai-San Sekai Shop**. The **stamp rally** was themed around the chocolate production process and featured interactive learning using magnets and other tools, helping visitors understand the **structure and significance of fair trade** in a hands-on way.

The booth was met with an **overwhelming response**, with all products sold out by the end of the day. More than **10 volunteer staff** participated, facilitating meaningful conversations with visitors ranging from children to adults. This event served as a valuable platform to directly communicate the **social impact of fair trade** and the **future that World in Peace envisions**.

World in Peace and the SDGs

The SDGs (Sustainable Development Goals) are an action plan unanimously adopted by all 193 United Nations member countries in September 2015. Comprising 17 goals, these targets address global challenges such as poverty, welfare, and sustainable urban development, with the aim of achieving these goals by 2030. World in Peace contributes to eight of the 17 SDGs, specifically:



Diversifying Donation Methods

In our first year, we received generous support through online donations, donation boxes, and fair trade purchases—more than we expected, allowing us to help many people. To reach even more in the future, we'll need further funding. Next year, we plan to introduce new ways to give, like in-kind donations and memorial contributions, making it easier for anyone to join and support our work.

Establishing Systems For Future Disasters

The Nankai Trough and Tokyo Metropolitan Area earthquakes are predicted to occur within the next 30 years. Particularly, the Nankai Trough earthquake has an 80% probability of happening, with catastrophic impacts expected. To prepare for such unprecedented disasters, World in Peace is focusing on building a networked headquarters function and strengthening our support systems. This will allow us to provide swift emergency aid when disaster strikes.

Accelerating Emergency Response

From our first-year experiences, we learned that relying on post-disaster donations for support often delays aid, especially during crucial initial response phases. In response, we have begun developing the "Carista's Wallet," a fund set aside in advance, ensuring we can immediately respond to the needs on the ground when a disaster occurs. This approach will enable us to provide swift, life-saving support as soon as disaster strikes.

Support from Corporate and Organizational Partners

Support through Charity Exhibitions and Donation Boxes



MAY6TH

The collaboration exhibition between **SHARKY IN REAL WORLD** and **May 6th**, provided visitors with a special experience by creating an immersive space based on the world of the original character **Sharky**. This included art displays, merchandise sales, and a café experience, offering attendees a unique and memorable time. **All proceeds** from the sales of goods were donated to World in Peace, further supporting our mission.

Additionally, in response to the forest fire disaster in **Ofunato City**, we set up donation boxes at the **Tennoji** and **Namba Marui** stores. As a token of appreciation for those who contributed, MAY6TH kindly offered warm gifts such as candles.

MAY6TH

THE CAKE BOUTIQUE

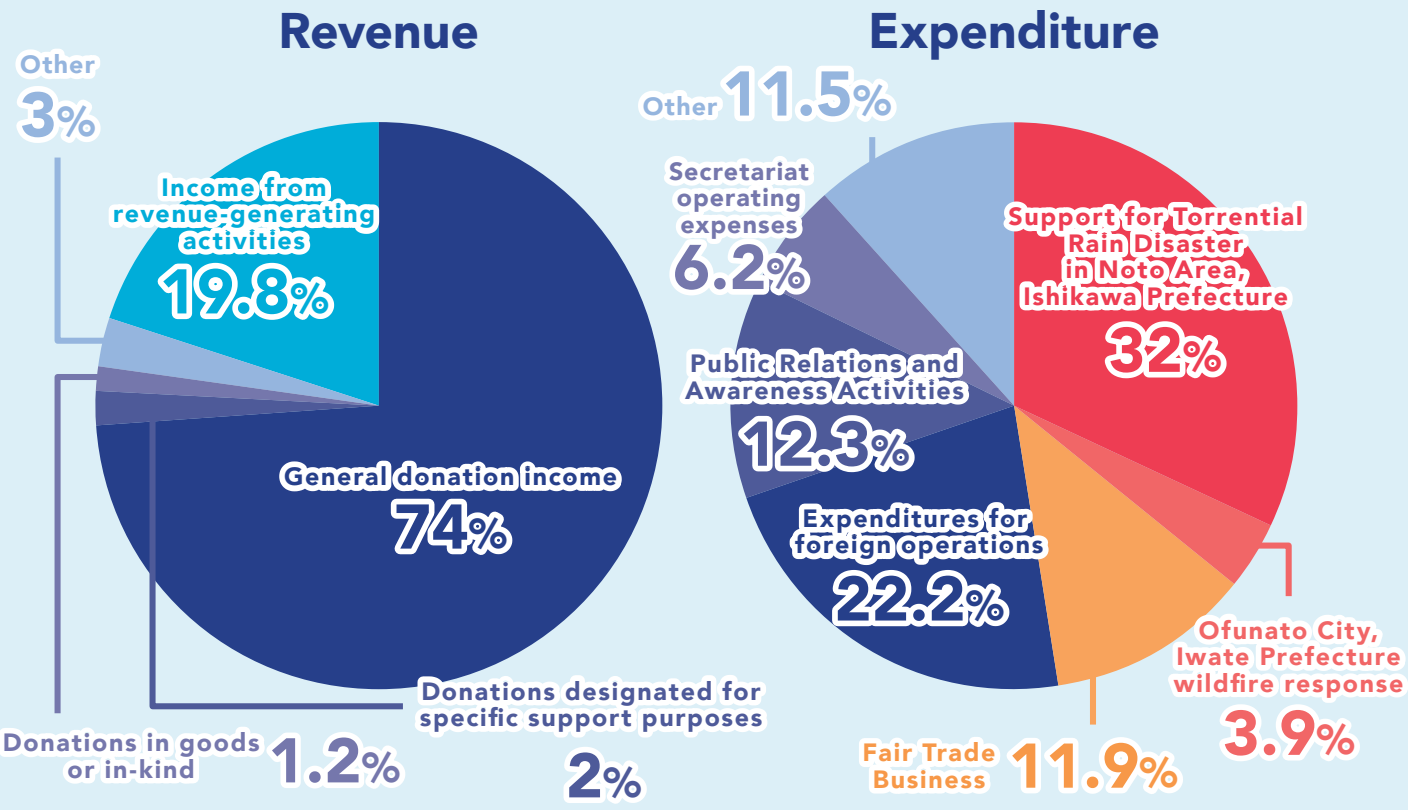
Support through Donation Box Installation		Fair Trade Products as Souvenirs for Children	
Nakashima Dental Clinic	Korean Kimpas Specialty Restaurant Kimpas Plus And	Seven Seas Academy	
 <p>In response to the forest fire disaster in Ofunato City, Nakashima Dental Clinic supported our emergency relief activities by installing a donation box at the clinic. Thanks to their cooperation, patients and local residents were able to participate in the relief efforts. This allowed many people to contribute, and we are deeply grateful for the support provided by Nakashima Dental Clinic and the local community.</p>	 <p>During the emergency relief fundraising for the forest fire disaster in Ofunato City, we received support through the installation of a donation box at the store. Customers visiting the store were actively encouraged to participate in the relief efforts, and this became an important step in expanding the circle of support.</p>	 <p>At Seven Seas Academy, bilingual high school and university students engage with children in a fun learning environment through English-based activities. During these sessions, our fair trade products were used as snacks and souvenirs. The children, especially, were drawn to the chocolate packaging designed by artists with disabilities, highlighting the connection between creativity and social responsibility. We are deeply grateful for their cooperation in supporting fair trade initiatives.</p>	

We have received generous donations and support from various companies and organizations who resonate with World in Peace's mission. Thanks to your contributions, our activities across various regions of the world have become possible. We extend our heartfelt gratitude on behalf of all our staff. Moving forward, we will continue to deepen our partnerships with corporate and organizational supporters to maximize our impact and deliver sustainable assistance, striving together to realize the future we aim for.

In the fiscal year 2024, the total income amounted to ¥727,907, with a significant portion raised through donations to support our activities. The primary source of revenue was **general donations** totaling ¥538,416, followed by donations designated for specific purposes (¥15,008), goods donations (¥8,843), other income (¥22,040), and income from fair trade activities (¥143,600). General donations, being unrestricted, allowed us to allocate funds across a wide range of projects.

On the other hand, the total expenditure for the year was ¥466,129, covering both domestic and international support activities as well as organizational operations. Domestic activities accounted for **47.8%** of total expenses, which included support for the **Noto region heavy rain disaster** in Ishikawa Prefecture (¥148,948), the **wildfire in Ofunato City, Iwate Prefecture** (¥18,245), and our **fair trade activities** (¥55,490). International projects, including **educational support in Cambodia**, accounted for **22.2%** of the total expenditures, underscoring our commitment to global humanitarian efforts.

In addition, administrative expenses necessary for the operation of the organization were recorded, including **public relations and advocacy activities** (¥57,375), office operations (¥28,965), and **other miscellaneous expenses** (¥53,610).



subject		money (yen)	subject		money (yen)
[A] Ordinary revenue			[C] Non-Operating Gains		
① Membership fee		0	Total non-recurring income		0
② Donations received		562,267	[D] Non-Operating Losses		0
③ Program Revenue		143,600	Total non-recurring expens		
④ Other revenues		22,040	Non-Ordinary Gains/Losses [C]-[D]=②		0
Total ordinary revenues		727,907	Net change in net assets before taxes ①+②=③		261,778
[B] Ordinary Expenses			Corporate, inhabitant and enterprise taxes④		
① Operating expenses		378,184	Net assets carried forward from the previous period⑤		
(1) Personnel expenses		0	Net assets carried forward to next period ③-④+⑤		261,778
(2) Other expenses		378,184			
② Administrative expenses		87,945			
(1) Personnel Expenses		23,000			
(2) Other expenses		64,945			
Total Ordinary Expenses		466,129			
Ordinary Profit/Loss [A]-[B]=①		261,778			

※The full activity statement and balance sheet are available for viewing on our organization's website.

Support Us

Our activities are supported by your donations.

World Changer (Ongoing Support)

With a monthly fixed donation, you can deliver prompt and continuous support to those facing difficulties, together with World in Peace.

Credit Card

One-Time Donation

This program allows you to freely choose the donation amount and specific projects you want to support at any time.

Credit Card

Apple Pay / Google Pay

Bank Transfer

Bank Name: Sumitomo Mitsui Banking Corporation (SMBC)

Branch: Takatsuki Branch Account Type: Ordinary (Futsu) Account Number: 3194838

Account Name: World in Peace (ワールドインピース) Swift Code: SMBCJPJT/SMBCJPJTXXX

*For bank transfers, we are unable to identify the donor. If you require a receipt, please contact us via the "Donation Receipt Request Form" on our website.

Your contribution will become the power to change the future.

You can apply via our website.



You can complete the process easily through our website.

https://www.wipeace.org/support_/

Support from Corporations and Organizations

For companies and organizations, there are various ways to contribute to social causes, such as donations, setting up donation boxes, or joint projects. Would you like to contribute to society in a way that suits your organization?



You can complete the process easily through our website.

<https://www.wipeace.org/group/>

■ Donations to World in Peace are not subject to tax deductions. Please be aware of this in advance.



World in Peace / WiP

(Japanese name: ワールド・イン・ピース)

E-mail: info@wipeace.org

For the office location, please contact us by email.

Corporate Number

9700150126945

Legal Status

Non-corporate entity
(Unincorporated Association)

Established

May 16, 2024

Executive Director

Lu He Rikuto (Hibi) Hong

deputy delegate

Yuuka Iwaki

head of the secretariat

Ameri Xenakis Yamaguchi



World in Peace



<https://www.wipeace.org/>



Instagram

@worldinpeacejapan